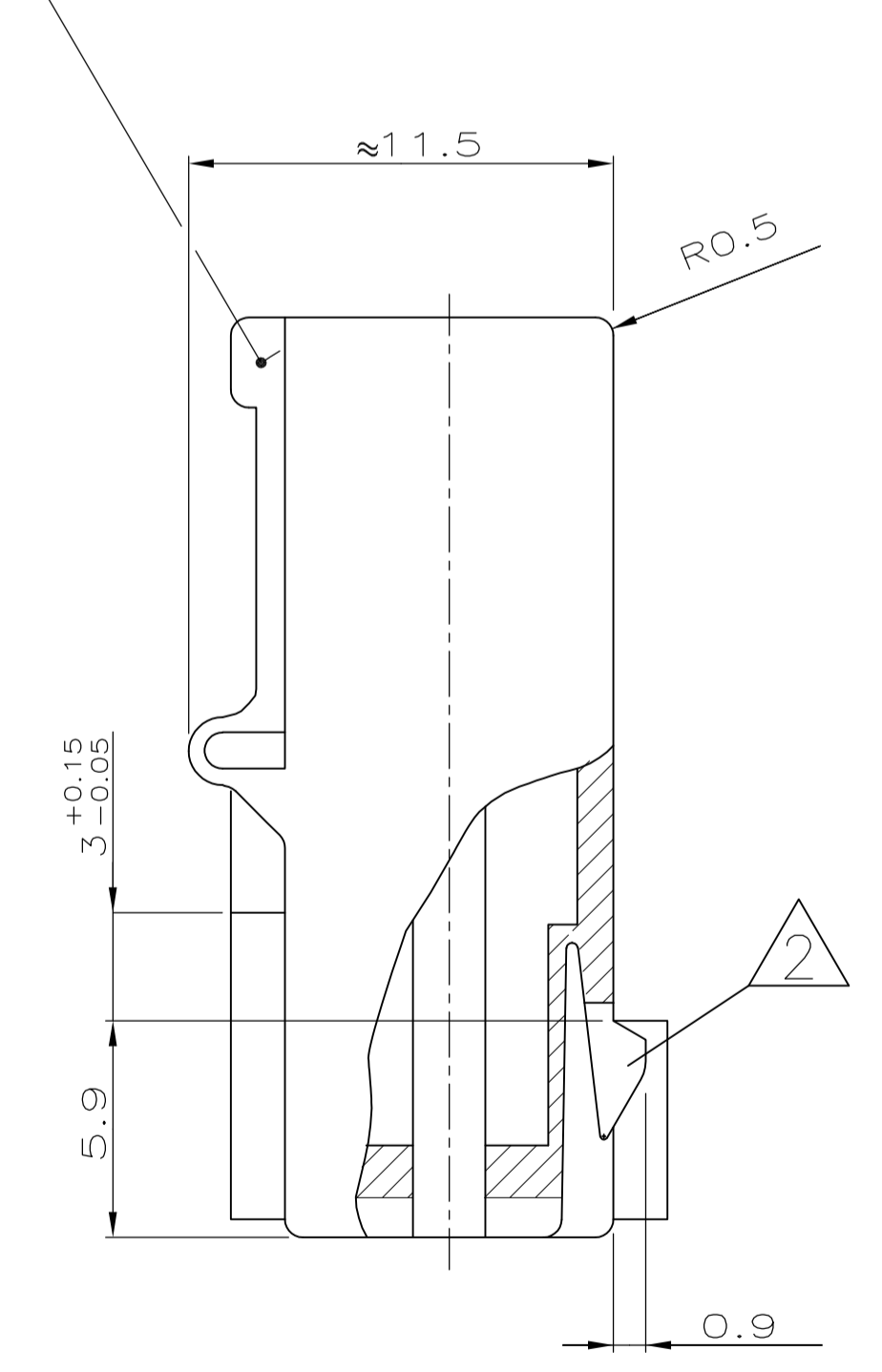


Bemerkungen  
NOTES

- 1 Kammer geeignet für TE Connectivity Timer-Kontakte: PN 926965  
CAVITY SUITABLE TO TE Connectivity TIMER-CONTACTS: PN 926973  
PN 926005  
PN 926006  
PN 927833  
PN 927837
- 2 Rasthaken zwischen Kammer Nr. ... (siehe Blatt 2 von 2)  
LOCKING LATCH BETWEEN CAVITY NO. ... (SEE SHEET 2 OF 2)
- 3 Kodierrippe zwischen Kammer Nr. ... (siehe Blatt 2 von 2)  
KEYING RIB BETWEEN CAVITY NO. ... (SEE SHEET 2 OF 2)
- 4 Polarisierungsrippen durchgehend bis Scharnier, nach unten (Lage "a")  
oder oben (Lage "b") versetzt, bei Kammer Nr. ... (siehe Blatt 2 von 2)  
POLARIZATION RIB GO THROUGH TO HINGE, POSITION "a" OR  
"b", AT CAVITY NO. ... (SEE SHEET 2 OF 2)
- 5 Verrastung für Deckel bei Kammer Nr. ... (siehe Blatt 2 von 2)  
LOCKING DEVICE FOR COVER AT CAVITY NO. ... (SEE SHEET 2 OF 2)
- 6 Firmenlogo und Teile-Nr.  
ARTWORK-LOGO AND PART #
- 7 Kammernummer  
CAVITY NUMBER
- 8 Tiefenanschlag zwischen Kammer Nr. 1 und 2, ebenfalls  
zwischen der letzten und vorletzten Kammer  
MATING STOP BETWEEN CAVITY NO. 1 AND 2, ALSO  
BETWEEN THE LAST AND THE LAST BUT ONE CAVITY
- 9 Maß A und Maß B siehe Blatt 2 von 2  
DIMENSION A AND DIMENSION B SEE SHEET 2 OF 2
- 10 Passender TE Connectivity Gegenstecker: (siehe Stückliste)  
MATED WITH TE Connectivity CONNECTOR: (SEE PARTS LIST)
- 11 Generell passende Flachsteckerwanne siehe Geräteanschlußzeichnung 88-9935-3  
GENERAL SUITABLE TAB HEADER HOUSING SEE DRAWING 88-9935-3
- 12 Leiterplattenanschluß siehe Zeichnung 88-9935-1  
CONNECTION TO THE PC BOARD SEE DRAWING 88-9935-1
- 13 SPECIAL HOUSING: MATERIAL MEET REQUIREMENTS OF UL94 V0 AND GWT 750 NO FLAME (IEC 60695-2-11)
- 14 PRELIMINARY PART: NOT YET RELEASED FOR PRODUCTION
- 15 MATERIAL: PA66 UL94 V0 AND GWT 750 NO FLAME (IEC 60695-2-11)

Deckel geschlossen gezeichnet  
COVER DRAWN CLOSED



Ansicht "Z"  
VIEW "Z"

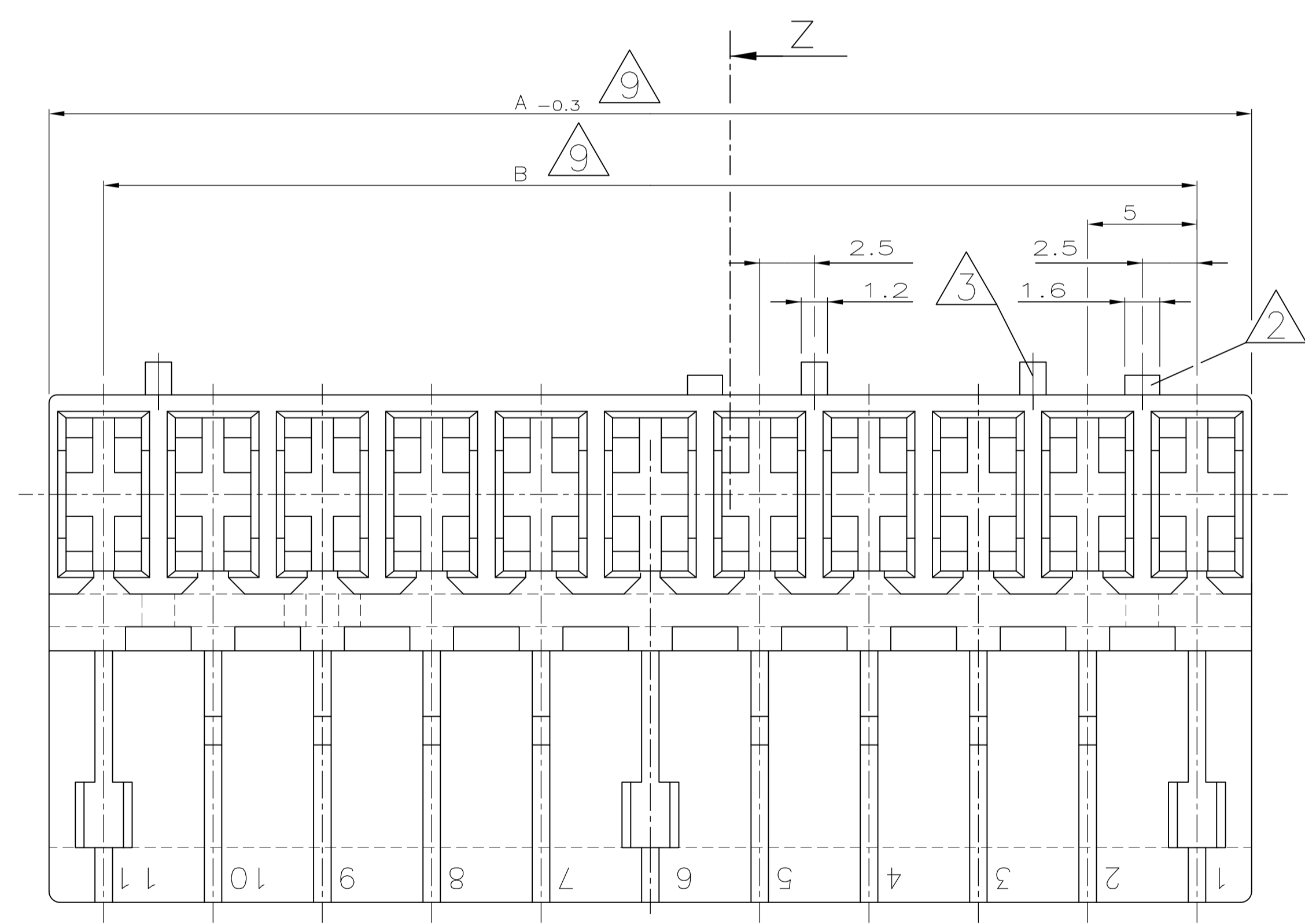


Tabelle mit Ausführungsvarianten  
und Bestellnummern auf Blatt 2 von 2  
LIST WITH DIFFERENT STYLINGS AND  
PARTNUMBERS SEE SHEET 2 OF 2

| siehe Blatt 2 / SEE SHEET 2 |      |       |                      |                     |
|-----------------------------|------|-------|----------------------|---------------------|
| BESTELL-NR.                 | POS. | STÜCK | BENENNUNG EINZELTEIL | WERKSTOFF           |
|                             |      |       |                      | OBERFLÄCHE<br>FARBE |

|  |                      |                                       |
|--|----------------------|---------------------------------------|
| THIS DRAWING IS A CONTROLLED DOCUMENT.<br>DIESE ZEICHNUNG IST EIN KONTROLLIERTES DOKUMENT. |                      | DIN<br>G.Holgus<br>20.02.89           |
| DIMENSIONS:<br>MASSEINHEITEN:<br>mm  |                      | CIK<br>B.Schnaubelt<br>20.02.89       |
| TOLERANCES UNLESS<br>OTHERWISE SPECIFIED:<br>ALLE REIN-TOLERANZEN                          |                      | APVD                                  |
| 0. PLC ± -   | 1. PLC ± 0.2mm       | PRODUCT SPEC<br>PRODUKTSPEZ           |
| 2. PLC ± -   | 3. PLC ± -           | APPLICATION SPEC<br>VERARBEITUNGSSPEZ |
| 4. PLC ± -   | ANGLES / WINKEL ± 1° | WEIGHT<br>GEWICHT                     |
| FINISH / OBERFLÄCHE / FARBE  |                      | SCALE<br>MASSSTAB                     |

|   |           |                               |                          |
|---|-----------|-------------------------------|--------------------------|
| ZEICHNUNG GÜLTIG AB .....   |           |                               |                          |
| <b>STE</b> TE Connectivity  |           |                               |                          |
| NAME  |           |                               |                          |
| 2-12 pol. Standard-Timer Gehäuse mit Innenverrastung, Raster 5mm<br>2-12 POS. STANDARD-TIMER HOUSING WITH INTERIOR LOCKING, PITCH 5mm |           |                               |                          |
| SIZE  | CAGE CODE | DRAWING NO.<br>ZEICHNUNGS-NR. | RESTRICTED TO<br>KUPFERN |
| A1  | 00779     | 928343                        |                          |
| CUSTOMER DRAWING / KUNDENZEICHNUNG  |           | SCALE<br>MASSSTAB             | SHEET<br>BLATT           |
|   |           | 5:1                           | 1 OF 2<br>REV            |

~ 927740

THIS DRAWING IS UNPUBLISHED.  
VERTRAULICHE UNVERÖFFENTLICHTE ZEICHNUNG

RELEASED FOR PUBLICATION  
FREI FUER VERÖFFENTLICHUNG  
ALL RIGHTS RESERVED.  
ALLE RECHTE VORBEHALTEN

VERWENDET FÜR

WAR NR.

CAD-ORIGINAL  
ZEICHNUNG NICHT ÄNDERN

ÄNDERUNGEN DIE DEM TECH-  
NISCHEN FORTSCHRITT DIENEN,  
BEHALTEN WIR UNS VOR

LOC DIST

REVISIONS  
ÄNDERUNGEN

DESCRIPTION  
BESCHREIBUNG

DATE DWN APVD

|   |     |             |     |      |
|---|-----|-------------|-----|------|
| P | LTR | DATE        | DWN | APVD |
| - | -   | SEE SHEET 1 | -   | -    |

2pol.

3pol.

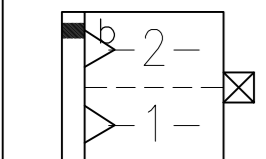
4pol.

5pol.

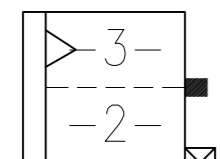
6pol.

7pol.

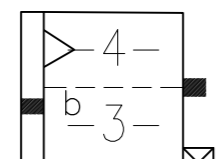
8pol.



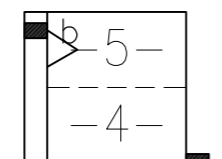
0-928343-2  
1-928343-2



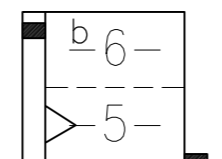
0-928 343-3  
0-1703059-3



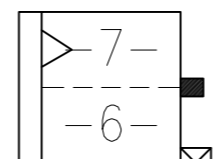
0-928343-4



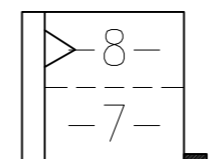
0-928343-5  
3-928343-5



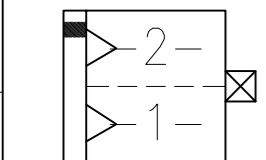
0-928343-6



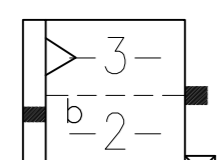
0-928343-7



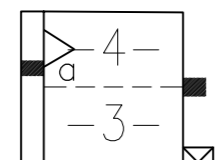
0-928343-8



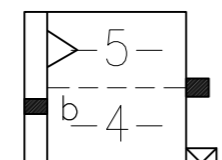
0-2178561-2



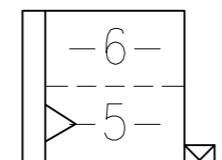
2-928 343-3



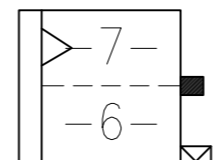
2-928343-4



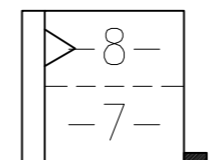
2-928343-5



2-928343-6



2-928343-7

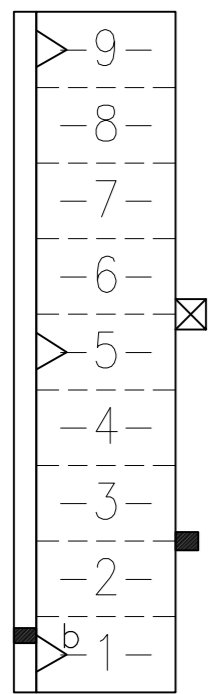


2-928343-8

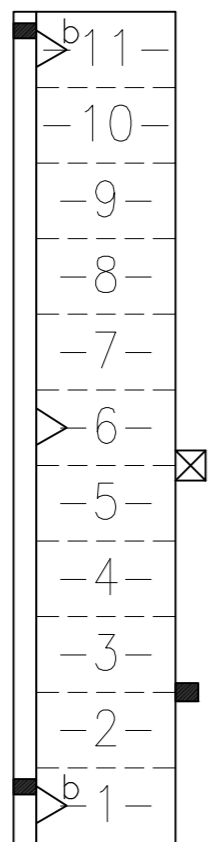
9pol.

11pol.

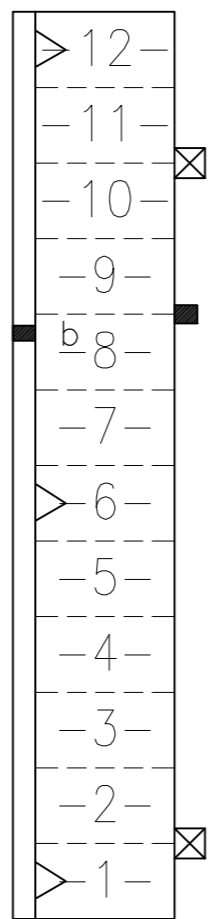
12pol.



0-928343-9

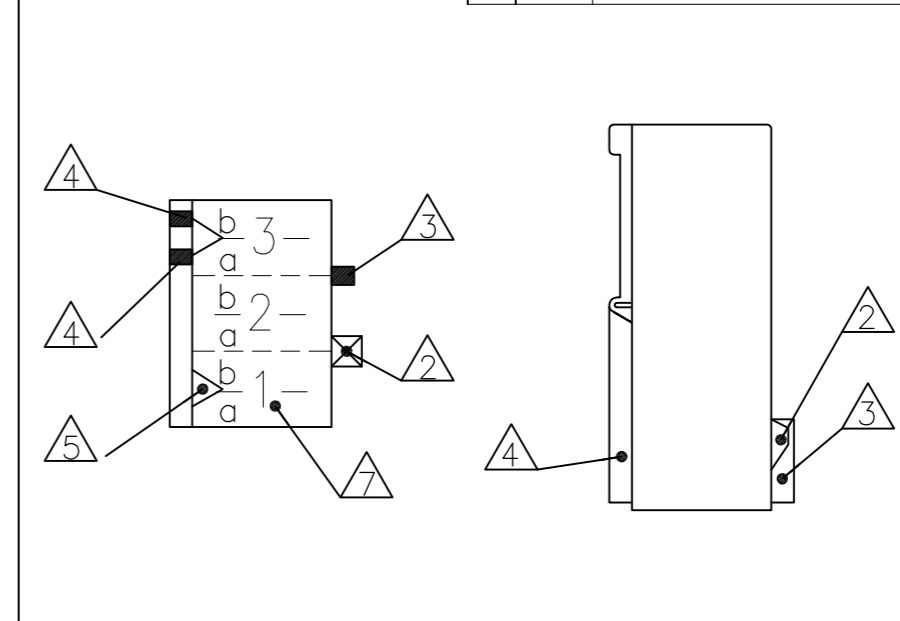


1-928343-1



1-928343-2

~927740



Darstellung:

Lage der Kodier- und  
Polarisierungsrippen und  
Rastfedern am Gehäuse

DESCRIPTION:

POSITION OF KEYING RIB AND THE  
LOCKING LATCH AT THE HOUSINGS

|             |          |       |       |         |           |      |              |       |
|-------------|----------|-------|-------|---------|-----------|------|--------------|-------|
| 3-928343-5  | 5        | 25    | 20    | natur   | PA6.6     | 1    | 0-927742-5   | 11 12 |
| 1-928343-2  | 2        | 10    | 5     | natur   | PA6.6     | 1    |              | 11 12 |
| 0-2178561-2 | 2        | 10    | 5     | natur   | PA6.6     | 1    |              | -     |
| 0-1703059-3 | 3        | 15    | 10    | natur   | PA6.6 V-0 | A    | 0-927742-3   |       |
| 1-928343-2  | 12       | 60    | 55    | natur   |           | B    |              |       |
| 1-928343-1  | 11       | 55    | 50    | natur   |           | B    |              |       |
| 0-928343-9  | 9        | 45    | 40    | natur   |           | B    |              |       |
| 3-928343-8  | 8        | 40    | 35    | grau    |           | B    |              |       |
| 2-928343-8  | 8        | 40    | 35    | schwarz |           | B    | 0-928230-8   |       |
| 0-928343-8  | 8        | 40    | 35    | natur   |           | B    | 0-928309-8   |       |
| 2-928343-7  | 7        | 35    | 30    | schwarz |           | B    |              |       |
| 0-928343-7  | 7        | 35    | 30    | natur   |           | B    | 0-928309-7   |       |
| 2-928343-6  | 6        | 30    | 25    | schwarz |           | B    |              |       |
| 0-928343-6  | 6        | 30    | 25    | natur   |           | B    | 0-927742-6   |       |
| 2-928343-5  | 5        | 25    | 20    | schwarz |           | B    |              |       |
| 0-928343-5  | 5        | 25    | 20    | natur   |           | B    | 0-927742-5   |       |
| 2-928343-4  | 4        | 20    | 15    | schwarz |           | B    |              |       |
| 0-928343-4  | 4        | 20    | 15    | natur   |           | B    | 0-927742-4   |       |
| 3-928343-3  | 3        | 15    | 10    | grau    |           | B    |              |       |
| 2-928343-3  | 3        | 15    | 10    | schwarz |           | B    |              |       |
| 0-928343-3  | 3        | 15    | 10    | natur   |           | B    | 0-927742-3   |       |
| 0-928343-2  | 2        | 10    | 5     | natur   |           | B    |              |       |
| Bestell-Nr. | Pol-zahl | Maß A | Maß B | Farbe   | Material  | Rev. | Gegenstecker |       |
| PART NO.    | POS.     | DIM A | DIM B | COLOUR  | MATERIAL  | REV. | MATED WITH   |       |

ZEICHNUNG GÜLTIG AB

|  |  |  |   |           |
|--|--|--|---|-----------|
| THIS DRAWING IS A CONTROLLED DOCUMENT.<br>DIESE ZEICHNUNG IST EIN KONTROLLIERTES DOKUMENT. |  | DWN<br>G.Holaus<br>20.02.89                  | TE Connectivity   |           |
| DIMENSIONS:<br>MASSEHEITEN<br>mm   |  | CHK<br>B.Schnaubelt<br>20.02.89              | 2-12 pol. Standard-Timer Gehäuse mit Innenverrastung, Raster 5mm<br>2-12 POS. STANDARD-TIMER HOUSING WITH INTERIOR LOCKING, PITCH 5mm |           |
| TOLERANCES UNLESS<br>OTHERWISE SPECIFIED:<br>ALLGEMEINTOLERANZEN                           |  | APVD<br>-                                    | RESTRICTED TO<br>NUR FUER   |           |
| 0 PLC ± -<br>1 PLC ± 0.2<br>2 PLC ± -<br>3 PLC ± -<br>4 PLC ± -<br>ANGLES / WINKEL ± 1°    |  | PRODUCT SPEC<br>PRODUKTSPEZ.<br>-            | SCALE<br>A2 00779   |           |
| MATERIAL   |  | APPLICATION SPEC.<br>VERARBEITUNGSSPEZ.<br>- | DRAWING NO.<br>ZEICHNUNGS-NR.<br>C=928343   |           |
| FINISH / OBERFLÄCHE / FARBE  |  | WEIGHT<br>GEWICHT<br>-                       | SHEET<br>BLATT<br>2 OF<br>VON 2   |           |
|  |  | CUSTOMER DRAWING / KUNDENZEICHNUNG           |   | REV<br>B6 |

Bemerkungen siehe Blatt 1 von 2  
NOTES SEE SHEET 1 OF 2